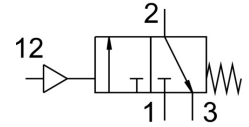


Shut off valve HEP-D-MIDI

Part number: 193249

FESTO



Data sheet

Feature	Value
Type code	HEP
Structural design	Piston gate valve
Actuation type	Pneumatic
Sealing principle	Soft
Exhaust air function	Without flow control option
Manual override	None
Reset method	Mechanical spring
Symbol	00991173
Valve function	3/2, closed, monostable
Operating pressure	0 bar ... 16 bar
Pilot pressure	3 bar ... 16 bar
Operating medium	Compressed air as per ISO 8573-1:2010 [7:4:4] Inert gas
Information on operating and pilot media	Operation with oil lubrication possible (required for further use)
Corrosion resistance class (CRC)	2 - Moderate corrosion stress
Note on materials	RoHS-compliant
Temperature of medium	-10 °C ... 60 °C
Ambient temperature	-10 °C ... 60 °C
Type of mounting	Line installation With accessories
Mounting position	Any
Flow direction	Non-reversible
Product weight	500 g
Pneumatic connection 3	G1/4
Pilot air port 12	G1/8
Air quality class at the output	Compressed air as per ISO 8573-1:2010 [7:4:4] Inert gas
Seals material	NBR
Housing material	Die-cast aluminum